

SOURCE WATER PROTECTION PLAN DEVELOPMENT

Source Water Assessment Report Review

The MMWSC received their Source Water Assessment Report from the Colorado Department of Public Health and Environment in November 2004. During the Source Water Protection stakeholder meetings, the assessment report was reviewed and used as a starting point to guide the development of this Source Water Protection Plan. A copy of the Source Water Assessment Report for the MMWSC can be obtained by contacting the Company or by downloading a copy from the CDPHE's SWAP program website located at: <http://www.colorado.gov/cs/Satellite/CDPHE-WQ/CBON/1251596793639>.

Defining the Source Water Protection Area

The State's Assessment Report included a delineated Source Water Assessment Area for the MMWSC surface water sources. Delineation is the process used to identify and map the drainage basin or watersheds that supplies water to a surface water source. The delineated source water assessment area provides the basis for understanding where the community's source water and potential contaminant threats originate.

The MMWSC Board reviewed the State's delineated Source Water Assessment Area for the water source and decided to add the area of private land around their intakes, and portions of North Fox Creek. The Source Water Protection Area for MMWSC includes the Willow and South Fox Creek watersheds upstream from the emergency pump station, approximately 2.9 square miles (Fig. 11). This protection area is where the community has chosen to implement its source water protection measures to manage the susceptibility of their source water to potential contamination.

Source Water Protection Zones

The Source Water Protection Area includes the following protection zones:

***Zone 1** is located 1,000 feet on either side of the surface water drainage network. Zone 1 is the most sensitive and critical area to protect from potential sources of contamination. This area is where nonpoint source contaminants are most likely to reach the water source.*

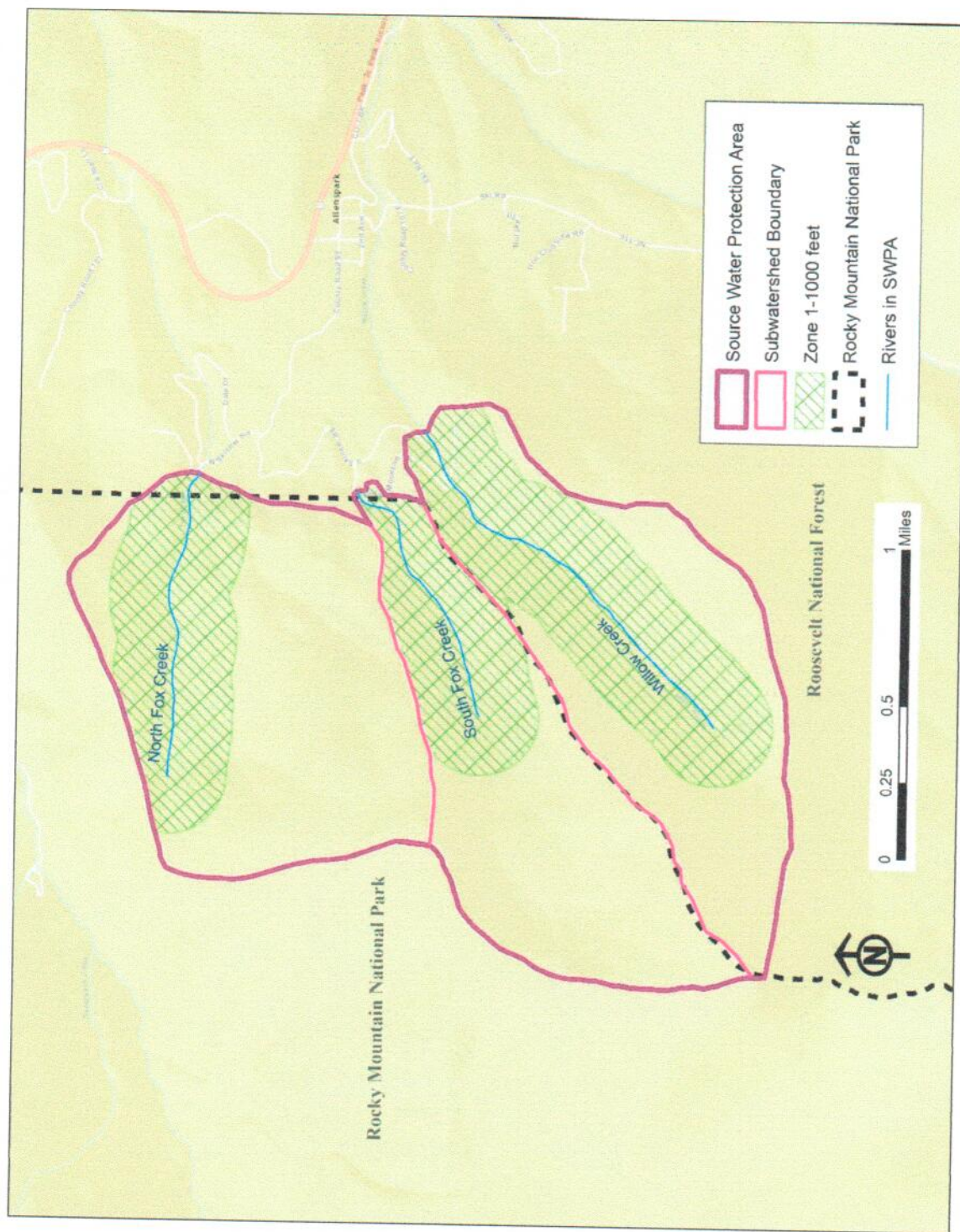


Figure 11. Map of the Meadow Mountain Water Supply Company's Source Water Protection Area.

SOURCE WATER PROTECTION MEASURES

Best Management Practices

The Board reviewed and discussed several possible best management practices that could be implemented within the Source Water Protection Area to help reduce the potential risks of contamination to the community's source water. The Board established a "common sense" approach in identifying and selecting the most feasible source water management activities to implement locally. The focus was on selecting those protection measures that are most likely to work for the community. The best management practices were obtained from multiple sources including: Environmental Protection Agency, Colorado Department of Public Health and Environment, Natural Resources Conservation Service, and other source water protection plans.

The Board recommends the best management practices listed in Table 5, "Source Water Protection Best Management Practices" be considered for implementation by:

- Meadow Mountain Water Supply Company
- Boulder County
- National Park Service, Rocky Mountain National Park
- Colorado Rural Water Association
- Citizens of Triple Creek subdivision and Allenspark
- Visitors to the South Fox Creek and Willow Creek watersheds

Evaluating Effectiveness of Best Management Practices

The Meadow Mountain Water Supply Co. is committed to evaluating effectiveness of the various source water best management practices that have been implemented. The public will be informed at their annual meeting on the outcomes of the various source water best management practices implemented. It is recommended by CRWA that this Plan be reviewed at a frequency of once every 1-3 years or if circumstances change resulting in the development of new water sources and source water protection areas, or if new risks are identified.

The Board of MMWSC is committed to a mutually beneficial partnership with the Colorado Department of Public Health and Environment in making future refinements to their source water assessment and to revise the Source Water Protection Plan accordingly based on any major refinements.

Table 5. Source Water Protection Best Management Practices

Issue	Management Approach	Implementer
<i>Wildland Fire</i>	<ol style="list-style-type: none"> 1. Refer to the Allenspark Community Wildfire Protection Plan and Watershed/Wildfire Assessment Report as guides to understand wildfire risks and measure that may reduce risk. 2. Share maps, GIS shapefiles, and Emergency Notification Cards with RMNP, U.S. Forest Service and Boulder County. 3. Support efforts to mitigate wildfire risks within the source water protection area (i.e. location of sediment pits to construct post-fire, create a "no-slurry" zone around source waters, and have a stockpile of sandbags available at various locations). 	<p>MMWSC</p> <p>MMWSC CRWA</p> <p>MMWSC</p>
<i>Public Land Management</i>	<ol style="list-style-type: none"> 1. Keep informed and participate in public land management issues/activities at the district and regional level including: Forest Plan Revisions, Fuels Reduction Plan, Timber Management Plan, Wilderness designations, and other outreach opportunities. Provide written comments to public land managers on source water protection concerns. 2. Support efforts to improve watershed conditions (i.e. fuels reduction activities, wildfire assessment, and other reclamation projects). 3. Actively continue to foster an open, collaborative relationship with the National Park Service, Boulder County, and U.S. Forest Service to protect water quality in the watershed. Support that collaboration through memorandums of understanding. 4. Provide the NPS with documentation of impacts of camping in the SWPA (photographic evidence of impacts, traffic counts, water quality concerns, erosion, and compacted soil). Encourage public land managers to create a recreation corridor with designated campsites and buck and pole fencing to identify the campsites; restroom facilities away from the stream corridor; and public outreach to educate recreationist of changes. Create a list of property owners along the road/creek corridor and encourage property owners to post private property sign to discourage illegal camping on private land. 5. Provide public land managers with a copy of the Source Water Protection Plan and GIS mapping information of the SWP area and encourage them to overlay this area on their planning and fire maps. 	<p>MMWSC</p> <p>MMWSC</p> <p>MMWSC</p> <p>MMWSC RMNP</p> <p>CRWA MMWSC</p>

Table 5. Source Water Protection Best Management Practices

Issue	Management Approach	Implementer
Water Utilities	1. Ensure the security of the water facilities with fencing and signage.	MMWSC
	2. Inspect and protect the water system; be knowledgeable of the emergency response plan; and provide information concerning the SWPP and implementation measures in the annual Consumer Confidence Report (CCR).	MMWSC CRWA
	3. Educate the public at the trailhead area about the source water protection area, proper disposal of human and dog waste (i.e. kiosk with map of SWPA and information, drinking water protection area signage, contact information on who to call to report vehicular spills).	MMWSC
	4. Inspect intake area for sediment buildup and implement measures to reduce sediment entering the intakes (i.e. sediment removal at site).	MMWSC
	5. Regularly inspect the parking lot area of the SWPA for vehicular spills and purchase small spill kits to mitigate spills.	MMWSC
	6. Continue to perfect the ownership and management interests in the recreation areas which contain: diversion infrastructure, easements, watersheds and historic public access, for current and future source water protection..	MMWSC