

Long Term 2 Monitoring Plan – Round 2

I. GENERAL INFORMATION

A. Water System Information*

B. Date Submitted* 11/28/17

Water System Number: CO-0207504

Water System Name: Meadow Mountain Water Supply Company

Address: P.O. Box 162, _____

City: Allenspark State: Colorado Zip: 80510

Population Served: 80

System Type: CWS

Number of Surface Water Intake Sources: 2

B. Contact Person*

Name: Rachel Barkworth

Title: Board Member

Phone #: 303-823-2318 Fax #: _____

E-mail: RCBarkworth@yahoo.com

C. Sample Location: _____

Provide sample location worksheet (attached) and schematic (attached) showing raw water intake(s), sample location(s), pre-treatment, point of chemical addition(s), filter backwash water recycle, the water treatment plant.

D. Sample Schedule:

Attach sampling dates

E. Approved Laboratory:

An agreement has been reached between the _____ (Water System) and _____ (Laboratory) to analyze all *Cryptosporidium* monitoring samples required for the Long Term 2 Surface Water Treatment Rule.

An agreement has been reached between the _____ (Water System) and _____ (Laboratory) to analyze all *E.coli* monitoring samples required for the Long Term 2 Surface Water Treatment Rule.

An agreement has been reached between the Meadow Mountain Water Supply Company (Water System) and Town of Estes Park – Water Department (Laboratory) to analyze all turbidity monitoring samples required for the Long Term 2 Surface Water Treatment Rule.

OR

The _____ Water System is an approved laboratory for turbidity monitoring and will analyze all required turbidity samples for the Long Term 2 Surface Water Treatment Rule.

Long Term 2 Monitoring Plan – Round 2

II. SAMPLING LOCATION WORKSHEET

Water System Name: Meadow Mountain Water Supply Company Water System Number: CO-0207504

Water Treatment Plant Name: MMWSC Water System Facility ID: CO-0207504

1. Source Name	South Fox Creek	Willow Creek
2. Source Type Flowing stream, or Lake/Reservoir	Flowing Stream	Flowing Stream
3. Source Water Sampling Location Provide State assigned sample point ID	CRS001	CRS001
4. Usage All year, Part-year, or Emergency (Describe conditions, constraints, months in operation)	All Year	All Year
5. Proportion of typical average daily flow into the plant	<u>50</u> %	<u>50</u> %
6. Pretreatment Practices Pre-sedimentation, Bank filtration, or Off-stream storage	Pre-sedimentation at WTP	Pre-sedimentation at WTP
7. Recycling Practices (if applicable) Description and return flow location	None	None
8. Chemical Pretreatment (Indicate location on plant schematic)	Chlorine	Chlorine
9. Sample Compositing Procedure (if applicable) Blended sample tap, Composite sample, or Weighted	Blended with Willow Creek	Blended with South Fox Creek

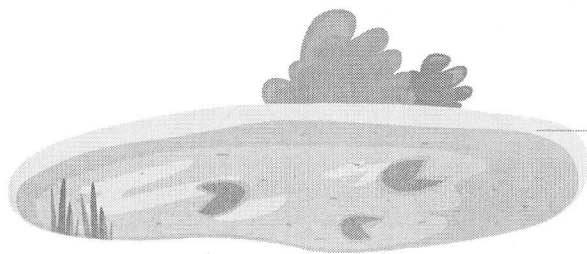
Use additional sheets or reverse side to provide more information

4. SAMPLE POINT SCHEMATIC

Indicate the following on the schematic that best represents your facility type (if applicable):

1. LT2 sampling location - *see schematic*
- NA 2. Points of chemical treatment prior to the treatment plant
3. Filter backwash water addition - *see schematic*
- NA 4. Pretreatment processes
5. Multiple source waters (show by adding any additional sources) - *see below and schematic*
- NA 6. Use additional schematics for additional treatment plants

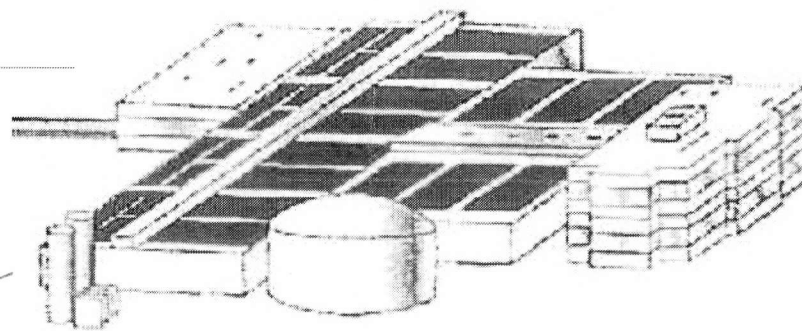
SOUTH FOX CREEK
Source Water



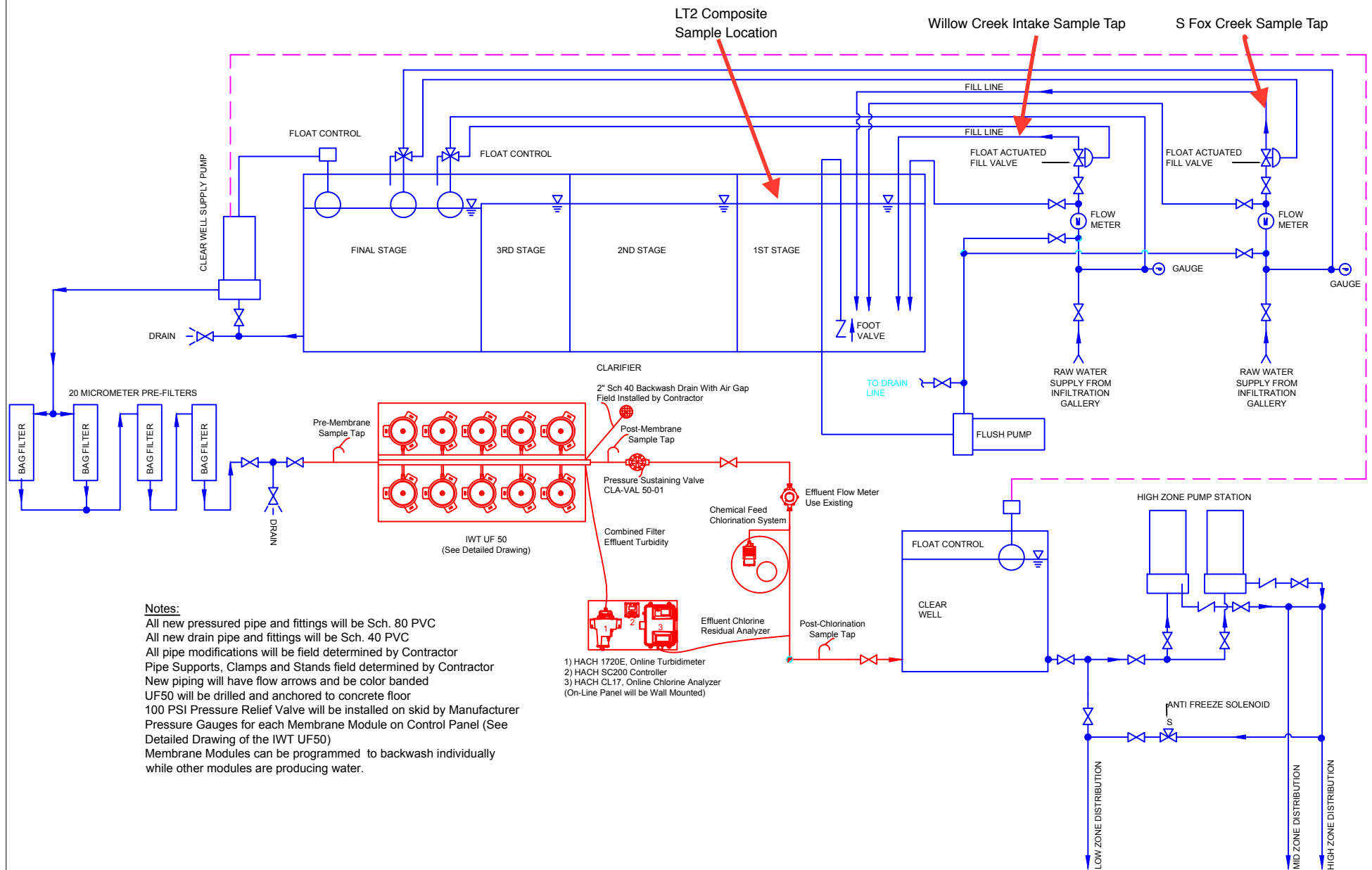
WILLOW CREEK
SOURCE WATER




Water Treatment Plant



Please see attached schematic diagram.



 Innovative Water Technologies	
MATL	Machine Number: IWT UF50
	Meadow Mountain Treatment Facility
Drawn By	Date
CSP12/26/13	Process Flow Diagram
Approved By	Date
JEB 12/26/13	Scale: No Scale
Sheet 1 of 1	

5. SAMPLE SCHEDULE

Schedule 4 Systems

***E. COLI* SAMPLING**

Schedule 4 systems must sample for *E. coli* at least once every two weeks for 12 consecutive months for a total of 26 samples. The Water Quality Control Division has developed a pre-approved monitoring plan for the *E. coli* sampling choice. If the System chooses, they may select this plan and sample for *E. coli* on the days that are indicated in grey highlights on the calendars below. If the System chooses to develop its own sampling plan, please indicate this selection below, and circle the alternative dates on the respective calendars.

OPTION TO SAMPLE FOR *CRYPTOSPORIDIUM*

Systems may choose to sample for *Cryptosporidium* if they notify the Department within 3 months before they begin sampling; in addition, if a System chooses to sample for *Cryptosporidium* it must choose to sample either twice a month for 12 consecutive months or once a month for 24 consecutive months. Please indicate this selection below. (Systems choosing to sample for *Cryptosporidium* are encouraged to contact your compliance specialist.)

SAMPLING DAYS HAVE STRICT LIMITATIONS!

- Systems are only required to conduct source water monitoring during the months the treatment plant is running. Seasonal systems should contact their compliance specialist.
- **System must collect its source water monitoring sample no earlier than two days before and no later than two days after the dates specified in this plan.**
- If an extreme condition or situation exists that prevents the collection or analysis or the systems fails to collect the sample, **replacement sampling is required.** Please contact your compliance specialist immediately.

Indicate in Check Box the System's Monitoring Plan Selection

1. System will sample for (check only one box below):

- a. ***E. coli*** (every two weeks for 12 months - total of 26 samples).
- i. System will use the Division pre-approved plan and monitor on the dates highlighted in grey on the calendars below. ☒
 - ii. System will develop its own monitoring plan and circle the dates they will monitor on the calendars below. ☐
- b. ***Cryptosporidium*** (twice a month for 12 months or once a month for 24 months). ☐

2017

JANUARY						
S	M	T	W	T	F	S
1	2	3	4	5	6	7
8	9	10	11	12	13	14
15	16	17	18	19	20	21
22	23	24	25	26	27	28
29	30	31				

FEBRUARY						
S	M	T	W	T	F	S
			1	2	3	4
5	6	7	8	9	10	11
12	13	14	15	16	17	18
19	20	21	22	23	24	25
26	27	28				

MARCH						
S	M	T	W	T	F	S
			1	2	3	4
5	6	7	8	9	10	11
12	13	14	15	16	17	18
19	20	21	22	23	24	25
26	27	28	29	30	31	

APRIL						
S	M	T	W	T	F	S
						1
2	3	4	5	6	7	8
9	10	11	12	13	14	15
16	17	18	19	20	21	22
23	24	25	26	27	28	29
30						

MAY						
S	M	T	W	T	F	S
	1	2	3	4	5	6
7	8	9	10	11	12	13
14	15	16	17	18	19	20
21	22	23	24	25	26	27
28	29	30	31			

JUNE						
S	M	T	W	T	F	S
				1	2	3
4	5	6	7	8	9	10
11	12	13	14	15	16	17
18	19	20	21	22	23	24
25	26	27	28	29	30	

JULY						
S	M	T	W	T	F	S
						1
2	3	4	5	6	7	8
9	10	11	12	13	14	15
16	17	18	19	20	21	22
23	24	25	26	27	28	29
30	31					

AUGUST						
S	M	T	W	T	F	S
		1	2	3	4	5
6	7	8	9	10	11	12
13	14	15	16	17	18	19
20	21	22	23	24	25	26
27	28	29	30	31		

SEPTEMBER						
S	M	T	W	T	F	S
					1	2
3	4	5	6	7	8	9
10	11	12	13	14	15	16
17	18	19	20	21	22	23
24	25	26	27	28	29	30

OCTOBER						
S	M	T	W	T	F	S
1	2	3	4	5	6	7
8	9	10	11	12	13	14
15	16	17	18	19	20	21
22	23	24	25	26	27	28
29	30	31				

NOVEMBER						
S	M	T	W	T	F	S
			1	2	3	4
5	6	7	8	9	10	11
12	13	14	15	16	17	18
19	20	21	22	23	24	25
26	27	28	29	30		

DECEMBER						
S	M	T	W	T	F	S
					1	2
3	4	5	6	7	8	9
10	11	12	13	14	15	16
17	18	19	20	21	22	23
24	25	26	27	28	29	30
31						

2018

JANUARY						
S	M	T	W	T	F	S
	1	2	3	4	5	6
7	8	9	10	11	12	13
14	15	16	17	18	19	20
21	22	23	24	25	26	27
28	29	30	31			

FEBRUARY						
S	M	T	W	T	F	S
				1	2	3
4	5	6	7	8	9	10
11	12	13	14	15	16	17
18	19	20	21	22	23	24
25	26	27	28			

MARCH						
S	M	T	W	T	F	S
				1	2	3
4	5	6	7	8	9	10
11	12	13	14	15	16	17
18	19	20	21	22	23	24
25	26	27	28	29	30	31

APRIL						
S	M	T	W	T	F	S
1	2	3	4	5	6	7
8	9	10	11	12	13	14
15	16	17	18	19	20	21
22	23	24	25	26	27	28
29	30					

MAY						
S	M	T	W	T	F	S
		1	2	3	4	5
6	7	8	9	10	11	12
13	14	15	16	17	18	19
20	21	22	23	24	25	26
27	28	29	30	31		

JUNE						
S	M	T	W	T	F	S
					1	2
3	4	5	6	7	8	9
10	11	12	13	14	15	16
17	18	19	20	21	22	23
24	25	26	27	28	29	30

JULY						
S	M	T	W	T	F	S
1	2	3	4	5	6	7
8	9	10	11	12	13	14
15	16	17	18	19	20	21
22	23	24	25	26	27	28
29	30	31				

AUGUST						
S	M	T	W	T	F	S
			1	2	3	4
5	6	7	8	9	10	11
12	13	14	15	16	17	18
19	20	21	22	23	24	25
26	27	28	29	30	31	

SEPTEMBER						
S	M	T	W	T	F	S
						1
2	3	4	5	6	7	8
9	10	11	12	13	14	15
16	17	18	19	20	21	22
23	24	25	26	27	28	29
30						

OCTOBER						
S	M	T	W	T	F	S
	1	2	3	4	5	6
7	8	9	10	11	12	13
14	15	16	17	18	19	20
21	22	23	24	25	26	27
28	29	30	31			

NOVEMBER						
S	M	T	W	T	F	S
				1	2	3
4	5	6	7	8	9	10
11	12	13	14	15	16	17
18	19	20	21	22	23	24
25	26	27	28	29	30	

DECEMBER						
S	M	T	W	T	F	S
						1
2	3	4	5	6	7	8
9	10	11	12	13	14	15
16	17	18	19	20	21	22
23	24	25	26	27	28	29
30	31					